

MULAG

Innovative Technologies for Road Maintenance Equipment



Front-Mounted Mower

FME 600

Unimog



MULAG – the Answer to all Questions in the field of Roadside Maintenance

The modular concept of MULAG power arms and the wide range of working attachments make their use economical and efficient: All tasks of road maintenance can be handled in a flexible and quick way.

Due to the high quality of workmanship downtime can be reduced and long repair times can be avoided. We can offer you conclusive solutions for roadside maintenance.

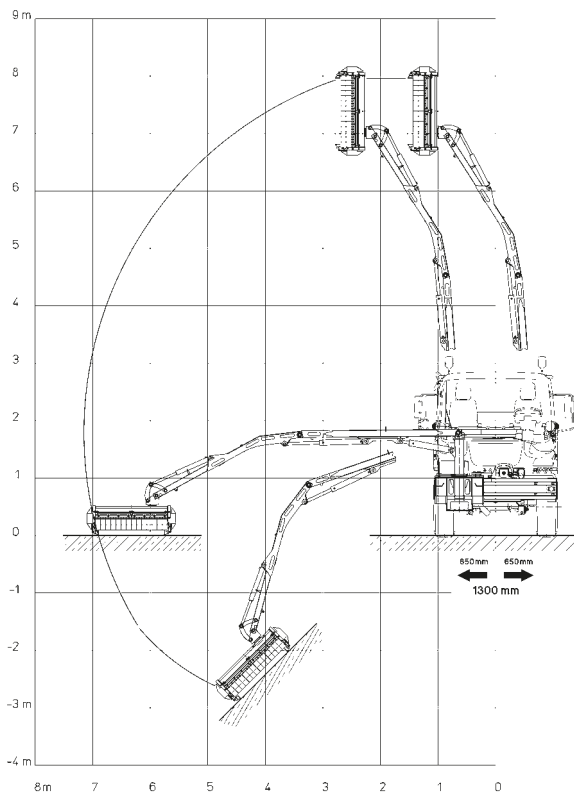
Technical Specifications of the FME 600

Designed for Model	U 300 / U 400 / U 500
Type of Fitting	Front mounting plate size 3 and 5
Attachments Fitting	Quick-change device
Reach	Up to 7.2 m right- and left-hand side
Lateral Shift	1300 mm
Rotational range of the Power Arm	240 degrees
Rotating Device for Working Attachments	- mechanical 360 degrees / 6 degree steps - hydraulic 230 degrees continuously (SA)
Drive	- vehicle power hydraulic system - rear PTO-shaft
Cutter Shaft Control	Electrical with Safety-Stop within 4 sec. for all working attachments
Transport height	approx. 3.6 m (depends on carrier vehicle)
Transport width	2.1 m
Control	- electro-hydraulic with two stage AES - CAN-Bus / proportional with continuous flail arm relief control type AER (SA) - CAN-Bus / proportional with automatic power arm relief control Mähtronic (SA)



Parking the power arm at the rear of the vehicle results in a well balanced load distribution on the axles without losing the dynamics of vehicle movement.

FME 600



Reach Diagram of the FME 600

Distributor

Manufacturer

MULAG

MULAG Fahrzeugwerk
Heinz Wössner GmbH u. Co. KG
Gewerbestraße 8
77728 Oppenau
Germany

Tel +49-(0)7804-913-0
Fax +49-(0)7804-913-163
E-Mail info@mulag.com
Web www.mulag.com





A new and improved level of international co-operation between MULAG and Daimler has begun with the development of the Unimog U300-U500 and newly the U20:

Developing the equipment system partnership, which stands for joint development of high quality, perfectly co-ordinated drive concepts and interfaces, plus continuous evolution of the systems, **an international strategic co-operation is born between MULAG and Daimler.**

It benefits from Mulag's international set up with strong distributors and therefore worldwide availability of high-quality attachments to be fitted onto UNIMOG for municipal use all over the year - **in renowned MULAG quality.**

MULAG Front-Mounted Mower FME 600

- Considerable Reach
- High Working Speed
- Perfect for One-Man-Operation
- Flexibility in all Working Areas

Roadside maintenance – uncomplicated and adaptable

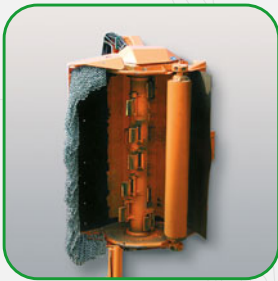
Our front mounted mowing equipment is attached to the Unimog's quick-change-system and well suited to one-man-operation. The front-axle locking device (torsion frame) prevents chassis distortion – in this way the equipment can also be used over rough terrain.

The FME 600 power arm has a range of up to 7.2 m and can be used either for right-hand or left-hand operation. The drive is provided either via the vehicle power hydraulic system or via front PTO-shaft.



For the FME 600 we offer a vast range of versatile working attachments.

From 2000 rpm
down to 0 rpm
within 4 seconds!



Safety-Stop

All our working attachments can be stopped by means of a brake valve within 4 seconds. With attachments equipped with the Mähtronic-flail arm relief control system, the cutter shaft slows down automatically whenever it is raised off the ground. This means extra safety when using the Mowing-System.



The FME 600 provides full working power during left-hand operation.

High performance in all working situations

Especially with the FME 600, due to the special power arm geometry, it is easy to work with considerable reach and also to mow ditches on both sides. At the same time, owing to the good vertical lift, work needs not be interrupted when approaching obstacles. In addition the lateral shift of the FME 600 makes the power arm more flexible in all working areas.

The MULAG Working Attachment Concept

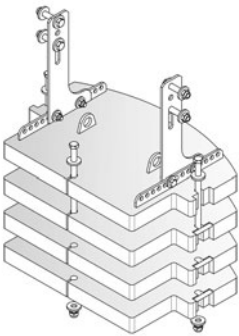
The large versatility of the MULAG-power arm along with our vast range of working attachments gives maximum utilisation throughout the year. Besides roadside maintenance attachments we also have a large range of equipment for specialised work like hedging and siding up or for embankment maintenance.

MULAG quality shows in many aspects of our working attachments – right down to the details.

MULAG counterweight

A modular ballast system is available to counterbalance the carrier vehicle.

Thanks to weight plates of 350 kg which can be combined together it is possible to obtain the following counter-weights: 350 kg, 700 kg, 1050 kg and 1400 kg. The counter-weight is mounted in the rear brackets (D50) and can be adjusted in the longitudinal axis of the carrier vehicle.



CAN-Bus-Control System

The individual system components (i.e. control unit, controller and control block) work together using the CAN-Bus System. Our control units are available in different models, even for the most demanding control jobs. The integral diagnostic system identifies faults instantly and helps to avoid expensive downtime.



Easy mowing on both sides of ditches – a great plus!

